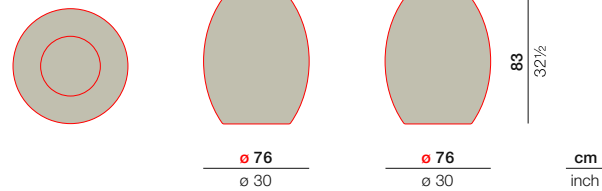


DALA

Planter L

Design by **Stephen Burks** | Item code: **073051** | Weight **8 kg/18 lbs** | Volume **0,48 m³/17 cu ft**

Measurements



Collection: Designed using the same mesh structure and environmentally-friendly fiber as the DALA furniture, the DALA planter and lantern are the perfect complement to any DEDON collection. Each piece is hand-woven using richly textured strands of DEDON's groundbreaking new ecological fiber.

Planter: This DALA planter brings subtle sophistication to any outdoor living room. It features a rotomolded internal pot.

Frame: Aluminum

Finishing: Frame is electrostatic powder-coated. Fiber is High-Density Polyethylene (HDPE).

Characteristics: Colorful, distinctive, innovative, versatile, practical, ecological

Frame Maintenance: Clean with soft cloth and warm water. Contact with chlorinated pool water should be avoided. Areas splashed with chlorinated water should be cleaned with ordinary water.

Fiber Standard



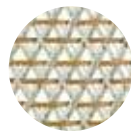
164
rioja



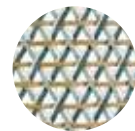
165
ubud



166
cuba



167
ibiza



168
bahamas

Additional Items



41 16 $\frac{1}{4}$

$\varnothing 39,5$ $\varnothing 15\frac{1}{2}$

Removable inner planter

To learn more about DEDON, our collections and warranty policy, please visit our website –

www.dedon.de

10/20

DEDON